



**SOUTH WEST PEAK**

LANDSCAPE AT A CROSSROADS

## SOUTH WEST PEAK LANDSCAPE PARTNERSHIP

### Community Roadshows

June 2015

#### Logistics

Three community roadshows were held on 22 June at Blaze Farm, Wildboarclough; 24 June at Warslow Village Hall; 30 June at Kettleshulme Village Hall. Partners were available at each roadshow to talk to people about the Landscape Partnership Scheme. In total 54 people attended, the majority of people stayed for at least half an hour. 11 people completed contact forms to be added to our mailing list, and 8 project idea forms were completed.

Each roadshow was run as a drop in event between 4pm and 8pm (5pm to 8pm at Kettleshulme). The roadshows were advertised in the following ways:

- posters placed in all village noticeboards were available (or left with a representative to display);
- press release;
- emails or letters to existing contacts;
- information on the South West Peak website, Facebook page and Twitter feed

#### Activities

The following information/activities were available at each roadshow:

- Signing in sheet and demographic information sheet
- Contact form
- Project idea form
- A4 summary of the Landscape Partnership Scheme
- Display panels with photographs and summaries of the projects under development
- Rolling Powerpoint presentation outlining the Landscape Partnership Scheme
- Large interactive map where people could note their 'positives' or 'advantages' (green post-it notes) and 'negatives' or 'challenges' (pink post-it notes)
- Give Five Words
- Flyers about Peak Land Lives oral history project
- Flyers about the hay meadow hunt data gathering exercise

#### How the information will be used

The advantages and challenges information and Give Five Words responses will be used as evidence of how people relate to the landscape in the Landscape Conservation Action Plan.

Those who requested it will be added to our partnership contact list.

Potential future volunteers have been identified and useful contacts made for project development.

#### Photographs of the roadshows

Below is a selection of photographs from the different roadshows.



Figure 1. Cultural Heritage projects display



Figure 2. Natural Heritage projects display



Figure 3. People & Communities projects display



Figure 4. The map exercise at Wildboardclough



Figure 5. The finished map at Wildboardclough



Figure 6. People taking part at the Warslow roadshow



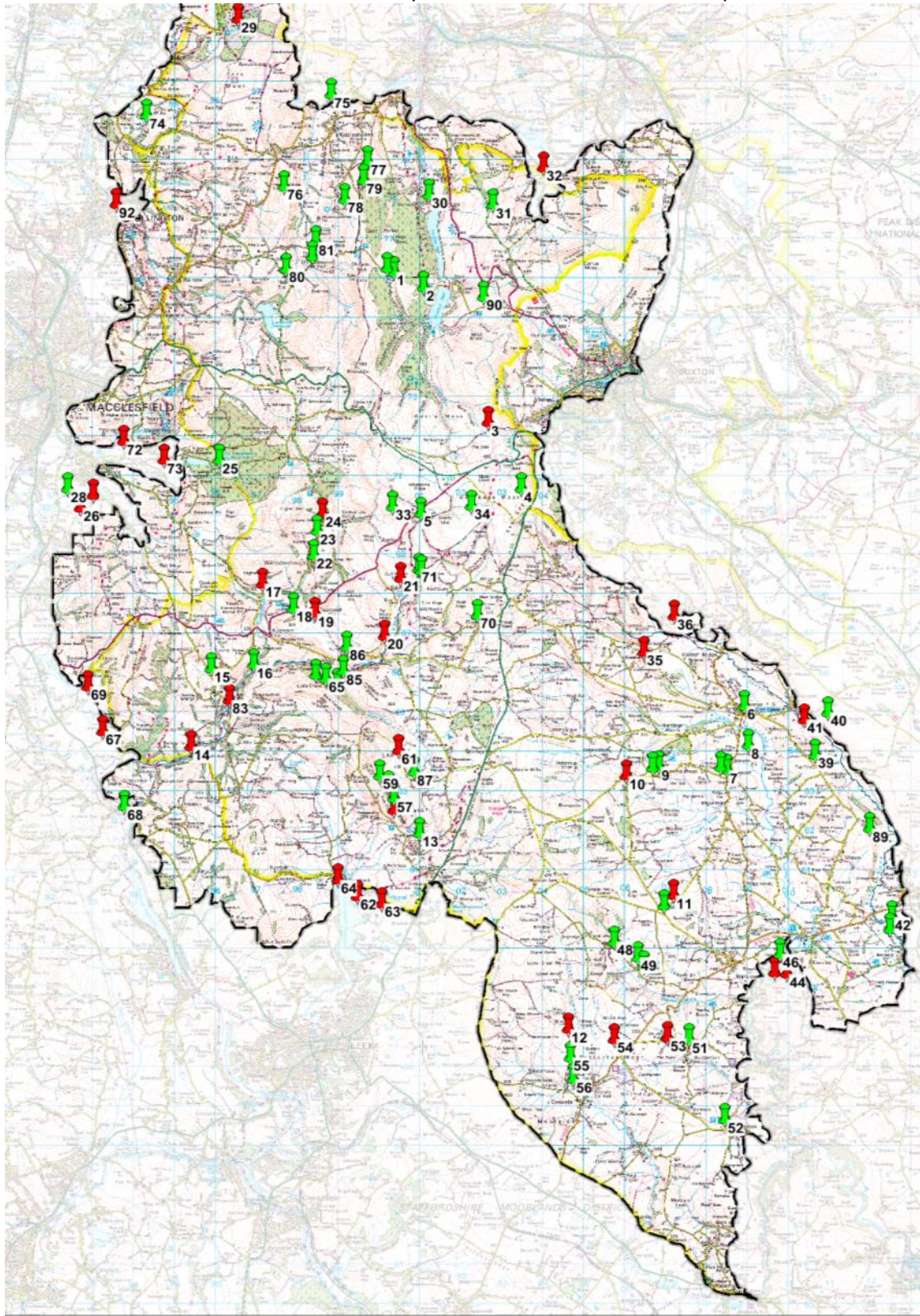
Figure 7. Enjoying the map exercise



Figure 8. The finished Warslow map



Probably the most popular activity was the 'advantages' and 'challenges' map where participants were asked to post their comments onto a large map of the area. Features of interest or their favourite places were noted onto green post-it notes, while features, places or issues of concern were written onto pink post-it notes. The map below shows where the comments were posted. General comments are plotted around the edges.



Below are the comments as written:

ID	Roadshow	Comment	Label	Positive	Negative
1	Wildboarclough	The shrine and fox edge fantastic views	Landscape	T	F
2	Wildboarclough	Rhododendron recognition would be helpful, fantastic show	Interpretation	T	F
3	Wildboarclough	4x4 off-roading out of control	Off-roading	F	T
4	Wildboarclough	Awesome access land all over including Axe Edge views from trig	Access/Recreation	T	F
5	Wildboarclough	Old mine workings chimney - needs restoring is very special part of local heritage	History	T	F
6	Wildboarclough	Active Action group at Longnor	Community	T	F
7	Wildboarclough	Fantastic roadside verges in full flower in June through August around Longnor and Newtown, also at 11 lane ends	Wildlife	T	F
8	Wildboarclough	Superb field barn which would welcome some preservation work	History	T	F
9	Wildboarclough	'Lark Park' field name at Newtown where I've heard skylarks singing for last 10 years, haven't heard them there this year...	Wildlife	T	F
10	Wildboarclough	The broadband in Newtown is really slow - prohibitive to running a business and for young people needing to engage with the digital world	Infrastructure	F	T
11	Wildboarclough	Fencing around Revidge Moor I find visually intrusive - could cope with that near Swallow Moss but getting too much now and spoiling the openness of the beautiful moor	Landscape	F	T
12	Wildboarclough	Indistinct footpaths	Access/Recreation	F	T
13	Wildboarclough	Fantastic geology & climbing & walking at Roaches, Ramshaw Rocks and Hen Cloud	Recreation	T	F
14	Wildboarclough	Problem with Himalayan balsam	Wildlife	F	T
15	Wildboarclough	Great village fete and fell race	Community	T	F
16	Wildboarclough	Best bluebell wood	Wildlife	T	F
17	Wildboarclough	Too early verge mowing around wildboarclough - mowing off wild flowers including bluebells	Wildlife	F	T
18	Wildboarclough	Hield Rocks in Hield Woods - concessionary path across top but opportunity to put new path and sculptures	Access/Recreation	T	F
19	Wildboarclough	Damage to paths by off-road motor bikers	Off-roading	F	T
20	Wildboarclough	Road poorly maintained close to 3 shires head so used by off-road bikers who damage it. Local farmer does not maintain stone walls	Off-roading	F	T
21	Wildboarclough	Damage to paths by off-road motorbikers	Off-roading	F	T
22	Wildboarclough	Wildboarclough school rooms - community meeting rooms, could be	Community	T	F

		better used, more activities - potential			
23	Wildboarclough	The most atmospheric old 'wourl' path	Access/Recreation	T	F
24	Wildboarclough	I am worried about clough brook. Apparently few fish and other stream life - why?	Wildlife	F	T
25	Wildboarclough	Good food and drink at weekends	Recreation	T	F
26	Wildboarclough	Concern of bulls in fields through which footpaths go - seem to be more and more lately	Access/Recreation	F	T
27	Wildboarclough	Generally footpath signage can be poor - sometimes poorly maintained or stocked by farmers	Access/Recreation	F	T
28	Wildboarclough	Unspoilt countryside - we are so lucky	Landscape	T	F
29	Warslow	Lyme Park? Must secure NT involvement	Partners	F	T
30	Warslow	One of my favourite walks. Fab views, Goyt Valley	Landscape	T	F
31	Warslow	Excellent walk. Old Roman road from Buxton to Whaley Bridge	Access/Recreation	T	F
32	Warslow	Loss of rural skills - walling	Community	F	T
33	Warslow	Lapwing snipe curlew	Wildlife	T	F
34	Warslow	Coal mines and history of	History	T	F
35	Warslow	4x4 damage to green lanes	Off-roading	F	T
36	Warslow	More work for people who live here	Community	F	T
37	Warslow	A barn owl flew across my path here last night	Wildlife	T	F
38	Warslow	Bluebells on School Clough lane	Wildlife	T	F
39	Warslow	Beautiful spectacular valley with a wide range of history	History	T	F
40	Warslow	Return of the barn owls	Wildlife	T	F
41	Warslow	Loss of flowers in grasslands. Loss of marshes - good for waders	Wildlife	F	T
42	Warslow	Great place for walking the dog (Beresford Dale)	Access/Recreation	T	F
43	Warslow	History of the Beresford Family	History	T	F
44	Warslow	Himalayan balsam	Wildlife	F	T
45	Warslow	Trail bike, 4x4 damage	Off-roading	F	T
46	Warslow	Packhorse trails copper at Ecton to Whiston smelters	History	T	F
47	Warslow	Species rich road verges around triangle and 500m in all directions	Wildlife	T	F
48	Warslow	Neolithic arrow head found in Upper Elkstones. Still wildflower meadows. Elkstones 'like a secret valley'	History	T	F
49	Warslow	Lesser butterfly orchid. Ragged robin, Twayblade in this area	Wildlife	T	F
50	Warslow	St Katherines Church (lost) at Lower Elkstones	History	T	F



51	Warslow	The trees. Bumble bees	Wildlife	T	F
52	Warslow	A pond with chirruping toads or frogs (I think) in spring	Wildlife	T	F
53	Warslow	Disappearance of field barns Butterson parish	History	F	T
54	Warslow	Threat to ground nesting birds from modern agricultural practice	Wildlife	F	T
55	Warslow	Packhorse trails copper at Ecton to Whiston smelters	History	T	F
56	Warslow	Heronry, southern marsh orchid	Wildlife	T	F
57	Warslow	Hen harriers on Roaches & peregrine falcons	Wildlife	T	F
58	Warslow	God's own rock	Landscape	T	F
59	Warslow	Climbing	Access/Recreation	T	F
60	Warslow	Lack of parking on Roaches & bracken	Infrastructure	F	T
61	Warslow	The demise of ground nesting birds. Badger predation	Wildlife	F	T
62	Warslow	Rush management & wader management, silage cutting dates	Wildlife	F	T
63	Warslow	Agreeing strategy for reducing mowing verges to allow plants to seed	Wildlife	F	T
64	Warslow	Threats to flora and wildlife with silage cuts	Wildlife	F	T
65	Warslow	Lud's Church, Gawain & the Green Knight	History	T	F
66	Warslow	Red deer	Wildlife	T	F
67	Warslow	Keep SW Peak free of wind turbines	Infrastructure	F	T
68	Warslow	Timeless small scale old fashioned mosaic	Landscape	T	F
69	Warslow	Threats to ground nesting birds from intensive agriculture (i.e. early silage cuts)	Wildlife	F	T
70	Warslow	Flash Money history. Teapot club parade. Newly established well dressing. Increasing numbers of lapwing & curlew. Several barn owls	History	T	F
71	Warslow	Three shire heads - popular tourist destination	Access/Recreation	T	F
72	Warslow	Poorly served by public transport. Dwindling & aging rural populations. Closure of schools and other facilities	Infrastructure	F	T
73	Warslow	Sustainable transport - cycle routes, bridleways, bus routes	Infrastructure	F	T
74	Kettleshulme	Shrigley Hall excluded from the national park in 1951 on request from the Salesians to avoid distracting the trainee priests	History	T	F
75	Kettleshulme	Lumb Hole Mill - former candle-wick manufacturer with water wheel - historic interest/future use?	History	T	F
76	Kettleshulme	New permissive path negotiated by East Cheshire Ramblers (SSE of Charles Head)	Access/Recreation	T	F
77	Kettleshulme	Cuckoo	Wildlife	T	F

78	Kettleshulme	Lapwing	Wildlife	T	F
79	Kettleshulme	Windgather Rocks - special landmark	Landscape	T	F
80	Kettleshulme	Memory stone in wall	History	T	F
81	Kettleshulme	Fabulous graveyard at Jenkin Chapel	History	T	F
82	Kettleshulme	History? (Saltersford Hall)	History	T	F
83	Kettleshulme	American crayfish	Wildlife	F	T
84	Kettleshulme	Links between Lud's Church and Sir Gawain & the Green Knight	History	T	F
85	Kettleshulme	Castors Cottage	History	T	F
86	Kettleshulme	Eagle and Child Pub and Peg Inn where payment was made in pegs	History	T	F
87	Kettleshulme	Amazing verge with lots of meadow flowers (back Roaches road)	Wildlife	T	F
88	Kettleshulme	Wild swimming	Access/Recreation	T	F
89	Kettleshulme	Purpose of high banks along this footpath & Dove?	Landscape	T	F
90	Kettleshulme	Shrine in wall	History	T	F
91	Kettleshulme	Folly/shrine	History	T	F
92	Kettleshulme	Dry stone walls not being repaired	Infrastructure	F	T